

▲ 概述:

耐诺复合锆珠NanorZr-30采用以氧化铝为主料、氧化锆作为增韧的敷料经滚动成型，高温烧结的方法制成。特别为非矿产品如瓷土、高岭土和碳酸钙等；农药、粘合剂等在大磨机和球磨机的分散和研磨。

▲ 特点

● 相对氧化铝陶瓷微珠，复合锆珠的结构是氧化锆和氧化铝的复合晶相，比单纯的氧化铝的微晶更细腻、致密，所以磨耗低；同时密度的增加提高了研磨效率，降低能耗；硬度的降低减少了对设备的损耗。



▲ Description:

NanorZr-30 Zirconia Toughened Alumina (ZTA) beads are made in ultra-fine alumina powder which toughened by zirconia with sinter method. It is a economic type grinding media for big filling volume mills to disperse non-metal mining such as china clay, Kaolin and CaCO₃.

▲ Features:

● Compared to alumina beads, the microstructure of ZTA beads are more compact. It lead to lower wear rate; The higher density get better grinding efficiency and lower energy consumption; The lower hardness gain lower abrasion to the contact parts of mills.

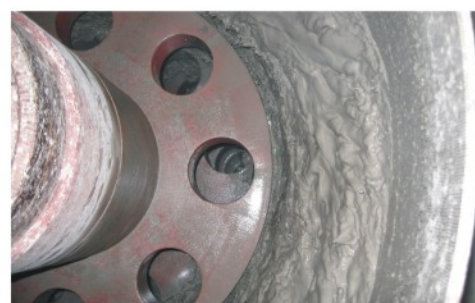
▲ 化学组成 Chemical Composition:

成分	Al ₂ O ₃	ZrO ₂	others
Wt%	60%	30%	10%

▲ 物理性质 Typical Properties:

比重 Specific Gravity	散重 Bulk Density	莫氏硬度 Hardness Mohs	维氏硬度 Hardness Vickers	耐压强度 Crushing Strength	吨磨耗 Wear Rate	球度 Sphericity	包装 Packaging
>3.6 kg/dm ³	>2.2kg/L	8	1200kg/mm ²	900N(2mm)	≈0.08kg/T	96%	25kg/桶

内俯图 Inside Planform Of Mill



▲ 规格 Sizes:

型号 Code	粒径(mm) Sizes	型号 Code	粒径(mm) Sizes
NZC8	0.8~1.0	NZC20	2.0~2.5
NZC10	1.0~1.2	NZC25	2.5~3.0
NZC12	1.2~1.4	NZC30	3.0~3.5
NZC14	1.4~1.6	NZC35	3.5~4.0
NZC16	1.6~1.8	NZC40	4.0~4.5
NZC18	1.8~2.0	NZC45	4.5~5.0

立式砂磨机
Vertical Mill

